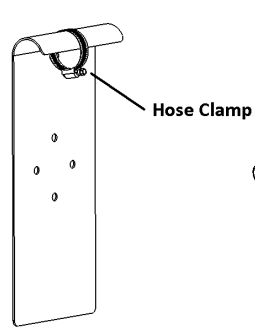


## **RZR Mounting Plate**

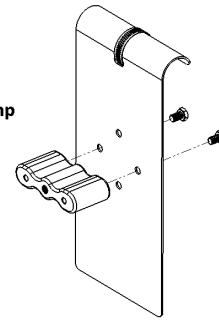
**Step 1** – Wrap the RZR Mounting Plate around the bar and use to hose clamp to stabilize the Mounting Plate on the bar (see **Figure 34**).

**Step 2** – Attach Upright Base to the RZR Mounting Plate using the hardware included (see **Figures 35** and **36**).

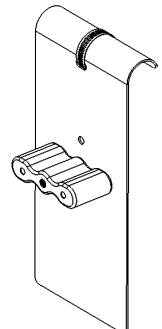
For additional functionality, two RZR Mounting Plates can be used to secure a 4-gallon or two combination 2-gallon Fuel Packs similar to the Universal Mounting Plate.



**Figure 34**



**Figure 35**



**Figure 36**